

# EEG System

## NS-EEG-D Serial



### Features:

1. High quality signal coupled with optical fibre isolation.
2. DC battery power operation eliminates AC power line interference.
3. Software sampling rate up to 512 Hz.
4. Built-in impedance testing function.
5. Ergonomic designed single shielded cup/clip electrodes with touch-proof connectors (1.5mm).
6. EEG brain mapping and EEG trend analysis.
7. Automatic spike recognition and spike-wave arbitrary setting functions.
8. Rapid event search and playback.
9. Choice of acoustic, visual and current stimulation.
10. Choice of different configurations:
  - a. Routine EEG, EEG-ERP and EEG-PSG
  - b. 24/32/48/60 channels unipolar EEG
  - c. 12 channels bipolar EEG

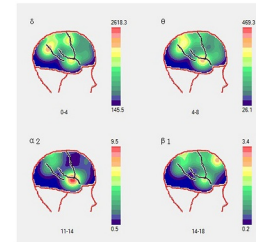
# EEG System

## NS-EEG-D Serial



### Parameters

Power supply voltage	AC 220V, 50HZ
Input impedance	> 1000MΩ
Noise level	< 0.4μV (rms)
Resistance polarization voltage	± 300mV
Frequency characteristics	0.5Hz ~ 10KHz
Channel configuration	24, 36, 48, 60 channels
Maximum no. of bipolar EEG channels	12
Sampling frequency	128Hz, 256Hz, 512Hz
Precision sampling resolution	16bit / 24bit
Digital low-pass filter control	5Hz, 10 Hz, 15Hz, 30Hz, 40Hz, 45Hz, 60Hz, 70Hz
Digital time constant control	0.01s, 0.02s, 0.03s, 0.1s, 0.2s, 0.3s, 1s, 2s, 3s
Digital zoom	from 1 to 10000 times
Environmental temperature range	-40°C ~ 40°C
Humidity Range	< 90%
Atmospheric pressure range	960hPa ~ 1060hPa
Photic stimulation Frequency	1-30Hz
ERP channels	EOG, Air Flow, Snoring, ECG, EMG, SpO <sub>2</sub> , RESP



Neurostyle Pte Ltd